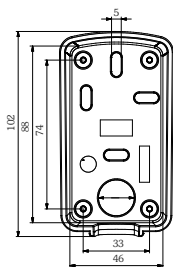
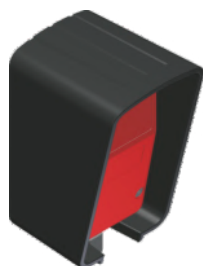


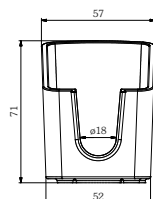
Zubehör Einweglichtschranken/ accessories through-beam photo switch



WSH-LS Wetterschutzhaube/rain cover

für die Lichtschranken RP 25, RP 20, EL 25, ARGOS 25 und BILIX 20, schützt vor Umwelteinflüssen wie Regen, Hagel und Schnee, schlagfest, UV-stabil/
for the photo sitches RP 25, RP 20, EL 25, ARGOS 25 and BILIX 20, protection against rain, hail and snow, impact resistant, UV-stabel

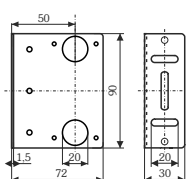
Material: PA6 GF15
WSH-LS 215315



HW-LS Haltewinkel/mounting bracket

für die Lichtschranken RP 25, RP 20, EL 25, ARGOS 25 und BILIX 20/
for the photo sitches RP 25, RP 20, EL 25, ARGOS 25 and BILIX 20

Material: BL 1,5 1.4301 (V2A)
HW-LS 214847



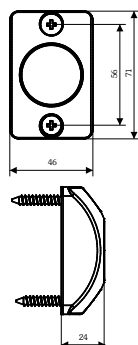
S34G (4polig/4-pin)

M8x1 schraubbar, gerade Ausführung/M8x1 screwable, straight
4polig/4-pin

S34G/5m 214512
S34G/15m 214513

Leitungslänge/cable length

5 Meter
15 Meter



APG-AR Kunststoffblende/ housing for surface mounting

zur Aufputzmontage der ARGOS-Lichtschranken/
housing for surface mounting of the ARGOS photo switch

Material: PA6 GF15
APG-AR 215919